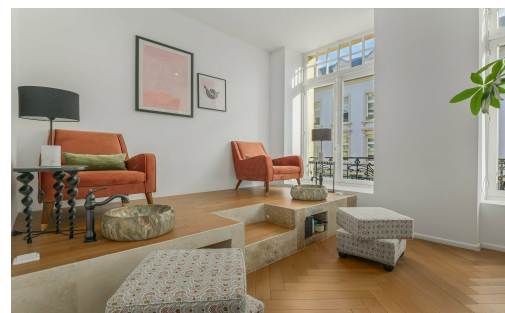




Commerce à louer

35.00 m²
Luxembourg

2 200 € / Month



DESCRIPTION

*** Direct contact ELISE +352 671 55 65 75 ***In the heart of the pedestrian center, in a magnificent setting combining old-world charm with modern renovations, I offer you this space dedicated to beauty.As part of a hair salon and beauty salon concept, you'll benefit from the infrastructure, facilities, equipment and clientele already acquired by this beauty spot.In a light-filled, airy and pleasant space, you'll be able to manage the following areas as you see fit for your customers: Manicure area with treatment table and equipmentPedicure area with armchairs and adapted water point. 22,5 m2Private treatment cabin (possibility of using LPG-type machines...) 12.5 m2WCYou and your customers will also have access to the hairdressing and catering area, with a bar on the first floor for a VIP welcome for all your customers. In this upscale, ultra-central space, you'll be part of a concept that's already a hit in Luxembourg City, with an existing upscale clientele.Features : Impressive...

DETAILS DU BIEN

Nombre de chambre(s) : -	Parking(s) : -
Surface : 35.00 m²	Parking collectif : -
Terrain : -	Année de construction : -
Balcon : -	Disponibilité : -
Terrasse : -	Nombre d'étage : -
Jardin : -	Etage : 1
Garage(s) : -	Rénové : non
Parking(s) souterrain(s) : -	Meublé : non

✓ RE/MAX FORUM

📍 154, avenue du X Septembre, L- 2550 Luxembourg



✉ forum@remax.lu



🌐 <https://www.remaxforum.lu/>

